



E.C. 003464

PTY LTD



## SWISPEC PTY LTD ELECTRICAL ENGINEERING AND ELECTRICAL CONTRACTING



Swispec Pty Ltd has been providing comprehensive electrical engineering, instrumentation, and electrical contracting services to industry leaders since 1988.

Swispec is unique in the industrial marketplace in that it offers a full-service, integrated approach to electrical contracting services. The Swispec team of professional electrical engineers, experienced electricians, hands-on project coordinators and product procurement specialists offers a wide range of services and support to help our clients meet their goals, on time and on budget. Building on a reputation for quality and reliability, our aim is to continue providing innovative turnkey solutions to all areas of industry.



After many years in the business, Swispec has built successful alliances with proven and trustworthy partners to ensure we can supply our clients with the very latest technology in equipment, instrumentation and software to meet the needs of every job.

Australian owned and managed, and having worked in a wide range of industries under frequently challenging circumstances, Swispec is equipped to deliver outstanding products and services to existing and new clients.

### Head Office/Bunbury

10 Verschuer Place  
PO Box 1735  
Bunbury, WA 6231  
Tel: (08) 9780 1666  
Fax: (08) 9780 1600  
swispec@swispec.com.au

### Perth Branch

Unit 7/24 Belmont Avenue  
Belmont, WA 6104  
Tel: (08) 9475 3666  
Fax: (08) 9475 3600  
swispec@perth.swispec.com.au

### Worsley Branch

PO Box 1735  
Bunbury WA 6231  
Tel: (08) 9734 5100  
Fax: (08) 9734 2142  
swispec@swispec.com.au

***"Swispec has a proven record of providing quality electrical, engineering and equipment supply services to some of the biggest names in industry. "***

Noel Roots, MD





*The  
major electrical  
engineering and  
contracting company  
in the  
South West region of  
Western Australia*

*A WA Telstra  
Business Award for  
Quality Control/  
Best Practice  
Winner*

## COMPANY PROFILE

Swispec Pty Ltd is a privately owned Australian registered company with its base established in Bunbury, Western Australia, and an engineering branch office in Belmont, Perth.

Swispec was formed in 1988. The venture was initially formed to provide electrical and instrumentation contracting services to local industry. Since its genesis, Swispec has grown to become the major electrical engineering and contracting company in the South West region of Western Australia. Our list of clients includes Iluka Resources, Worsley Alumina, Water Corporation of Western Australia, Western Power and Goodman Fielder.

Swispec's unique full-service, integrated approach to electrical contracting services has proven very successful, and the Swispec team of engineers, electricians, project coordinators and product sales managers are the power behind Swispec's ever-increasing capability. Services are now expanding to a wide range of industries, and include:

The company has a well-established staff of over 100 people ranging from

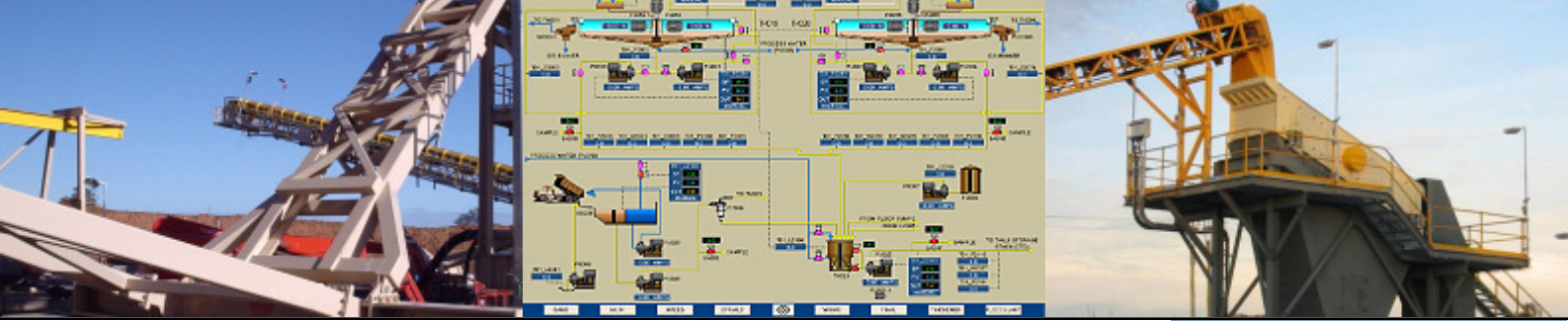
- Mining and processing
- Water and waste water
- Food processing
- Government services
- Hazardous areas

professional engineers, design draftsmen and highly-skilled tradespeople to experienced financial and safety managers.

In 1995, attention to detail and in-house quality control systems won Swispec the WA Telstra Business Award for Quality Control / Best Practice - then a Certificate of Merit at the national level.

Today Swispec employs that same level of service to a continually expanding client base. Swispec has a deliberate strategy to remain flexible and nimble, ready to adjust and exceed customer expectations. The men and women of Swispec are committed to sustaining safety excellence through continuous improvement practices and a thorough understanding of health and safety and management issues in large organizations. Due to the depth of experience, Swispec's highly skilled team is able to deliver and maintain a comprehensive and continuous supply of our full range of services and to respond to immediate needs, especially in emergency response modes.

To see how Swispec can help your business get the job done, contact us today.



## ELECTRICAL ENGINEERING AND DRAFTING SERVICES

Swispec offers a complete range of electrical engineering and drafting services, from concept and design through to installation and commissioning.

Swispec has been integral in many major projects throughout Western Australia and the Eastern States. We contract to the mineral sands, alumina, coal, water and food industries as well as to port authorities, councils and other government agencies. Our services include:

- Process Control System Design and Implementation
- Industrial Automation
- High Voltage Design and Modeling
- Electrical and Instrument Design for Industrial and Manufacturing Applications
- Motor Control Centre Design
- Project Management Supervision and Commissioning
- CAD Drafting
- Telemetry System Design and Implementation
- Single Line, Schematic and Wiring Diagrams
- General Arrangement for Electrical/Control Equipment
- PLC Termination Diagrams
- Instrument Loops
- As Building

With an engineering office in Bunbury and a branch engineering office in Perth, we are able to conveniently serve the needs of industry throughout Western Australia and around the country.

## ELECTRICAL AND INSTRUMENTATION SERVICES

Since establishment in 1988, Swispec Pty Ltd has become the leading electrical and instrumentation contracting company in the South West region of Western Australia, and our contracting operations have a long history of successful projects in the local region, interstate and overseas.

The delivery of successful projects is built around many hours of experience and dedication. The Swispec Electrical team offers expertise in the areas of:

- Design, Installation and Commissioning
- Maintenance
- Environmental Solutions
- Field Service
- High Voltage Installations
- Lighting Design and Installation
- Manufacture of Switchboards: Motor Control Centres (MCC)
- PLC Configuration
- Electrical Procurement
- Calibrations
- Commissioning
- Instrumentation Selection
- Electronic Servicing
- Environmental Solutions
- Field Service
- Laboratory Equipment
- Loop Tuning
- Manufacture
- Maintenance

*A long history of  
successful projects  
in the  
local region,  
interstate,  
and overseas*



*Swispec has  
partnered with  
key suppliers*

## PRODUCT SALES

Providing the right solutions for the job is essential to its success, and Swispec endeavours to secure the best price and timely delivery to keep your project on budget and on schedule.

So we have partnered with key industrial suppliers to offer a full-service product sales department to procure the latest technology at a competitive price for our clients' projects.

- Level Measurement
- Flow—Liquids
- Flow—Solids
- Pressure
- Temperature
- Analytical Products
- PLC, Scada, HMI
- VSD
- Energy Saving Devices for electric motors
- Valves, Actuators, Positioners
- Pneumatic Control
- Proximity Sensors
- RFID
- Radio Telemetry
- Bypass Gauges
- Pressure Gauges



**TO FIND OUT HOW SWISPEC CAN  
PROVIDE THE ENGINEERING, ELECTRICAL AND PRODUCT SOLUTIONS  
FOR YOUR PROJECT, CALL US TODAY.**

## CONTACT US

### Head Office

10 Verschuer Place  
PO Box 1735  
Bunbury, WA 6231  
Tel: (08) 9780 1666  
Fax: (08) 9780 1600  
swispec@swispec.com.au

### Perth Branch

Unit 7/24 Belmont Avenue  
Belmont, WA 6104  
Tel: (08) 9475 3666  
Fax: (08) 9475 3600  
swispec@swispec.com.au

### Worsley Branch

PO Box 1735  
Bunbury WA 6231  
Tel: (08) 9734 5100  
Fax: (08) 9734 2142  
swispec@swispec.com.au